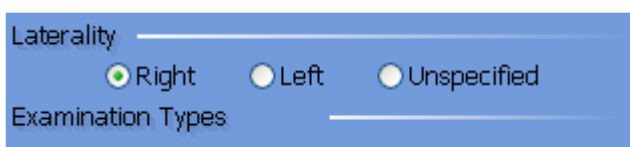


## Hints and Tips for screeners and graders

Its still early days and I would like to point out some issues that we are finding with some of the images/grading we are getting. These issues are spread out all over the Birmingham and Black Country screening services. Here are some helpful pointers to aid with grading and to make mine and your job easier. I feel that if we are all doing the same thing it will make grading a lot better and have more continuity.

- Remember to mark Right & Left Views

We've had quite a few images coming through with Right for all images or U unspecified.

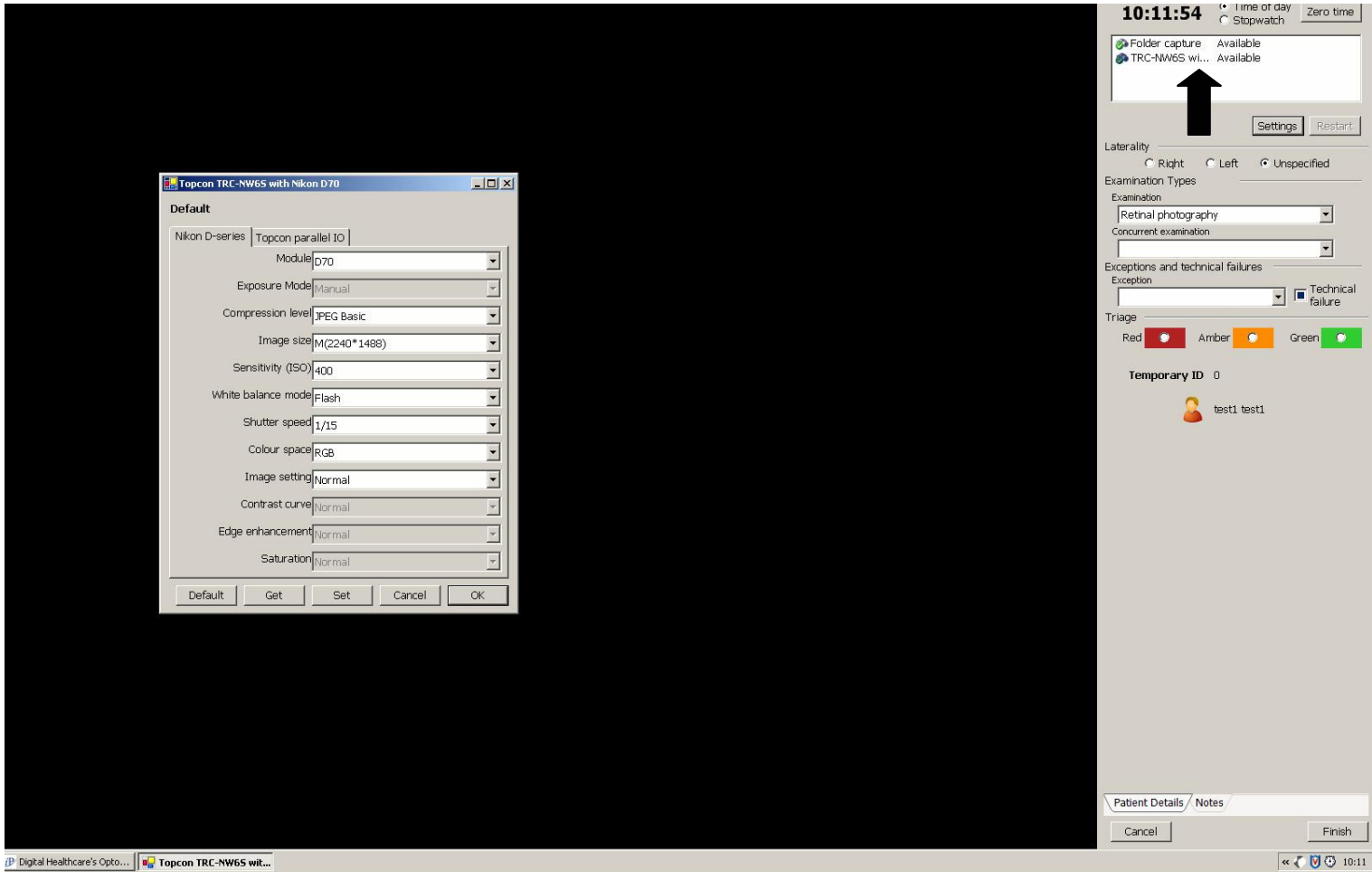



- Also please start with photographing the Right eye taking Macular first & then Disc ~ then Left macular & Disc.
- When possible (if you are using the Topcon NW6) please use the external fixator for the disc view. You will find you will get a better view & positioning of the disc. The internal fixator is good for the Macular view but we find that if used for the disc view it takes the disc too far over and not centred enough.
- If you mark an eye has having MNR or M1 please remember to mark R1 as well. Any retinopathy must be marked as R1, this is for audit purposes.
- Make sure camera lens is clean and don't mistake camera blobs for MNR or R1.
- Don't use amber queue for referring patients this queue is used in the hospital for referring pregnant patients. Only use Green queue for referring (they are all seen at the same time so doesn't make referring any quicker) and Red for Urgent patients (Pre-proliferative or worse).



- Please delete any extra images taken, only save images that are used for grading. This saves on storage space on the server.
- It's helpful to have an anterior view of the eye if the retinal pictures are cloudy or of poor clarity due to cataracts ect...

Also so that we are all using the same camera/software setting please refer to the below images and change your setting as illustrated. These are the default settings and seem to produce the best quality images.



These setting are found by clicking on here  and then clicking settings.